

LYMPHOMA BREAKFAST MEETING

Australasian Lymphoma Alliance (ALA),
Lymphoma and Related Diseases Registry (LaRDR),
Lymphoma Australia (LA)

International Convention & Exhibition Centre, Sydney
13 September 2022, 7–8:30 am

Working together to improve lymphoma patient outcomes

Agenda

7:00 – 7:10	Registration Light breakfast	
7:10 – 7:15	Opening Acknowledgement of Country	Dr Nicole Wong Doo
7:15 – 7:25	ALA presentation: An update on the Australasian Lymphoma Alliance	Prof Chan Cheah
7:25 – 7:35	LaRDR presentation: The future of patient-reported outcomes in LaRDR	A/Prof Zoe McQuilten
7:35 – 7:45	LA presentation: Lymphoma Australia – the whole picture	Ms Erica Smeaton
7:45 – 8:10	Panel discussion	Ms Janne Williams Mr Marty Luther Ms Sharon Winton Prof Chan Cheah A/Prof Zoe McQuilten
8:10 – 8:20	Closing	Dr Nicole Wong Doo

This meeting is proudly supported by the Australasian Lymphoma Alliance.



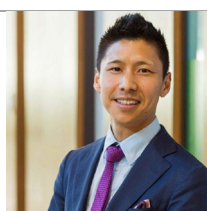
SPEAKER BIOGRAPHIES

Working together to improve lymphoma patient outcomes



Dr Nicole Wong Doo, Concord Hospital

Dr Nicole Wong Doo is a clinical and laboratory haematologist and the Director of Haematology Clinical Research Unit at Concord Hospital, a senior lecturer at Concord Clinical School and Honorary Research Associate at the Cancer Council Victoria. Nicole completed her PhD investigating the role of DNA methylation in multiple myeloma and B-cell non-Hodgkin lymphoma at the University of Melbourne. Her major research interests are in the epidemiology and treatment of lymphoma and multiple myeloma, and in translating evidence-based research into community settings. She is committed in supporting the education and development of haematological expertise in developing countries as proven by her experience on the Thailand/Burma border as a clinician, as a trainer with Australian Volunteers International, and a member of the RCPA Pathology Education Outreach Committee.



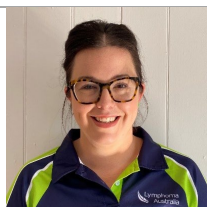
Prof Chan Cheah, Sir Charles Gairdner Hospital

Professor Chan Cheah is a Haematologist and Clinical Researcher at Sir Charles Gairdner Hospital and Linear Clinical Research. He graduated in Medicine from the UWA and completed post-graduate training at Fremantle Hospital, Peter MacCallum and MD Anderson, returning to Perth in 2015. Chan is the clinical lead for lymphoma and fellowship program director at Sir Charles Gairdner Hospital, Director of Haematology at Linear Clinical Research, Founder of Blood Cancer Research WA and current Chair of the Australasian Lymphoma Alliance. He has authored >110 publications and attracted >\$10 million dollars in competitive grant funding. His research interests are novel therapeutic approaches in diffuse large B-cell lymphoma, follicular lymphoma and mantle cell lymphoma and he has led multiple investigator-initiated trials in these areas. His passions outside of work are his family, cycling, double espresso and pinot noir.



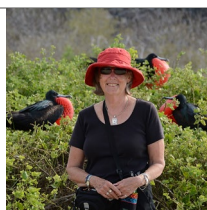
A/Prof Zoe McQuilten, Monash University

Associate Professor Zoe McQuilten is a haematologist and Deputy Director of the Transfusion Research Unit at the School of Public Health and Preventive Medicine of Monash University. She has been central in the development of a large registry program, including the Australia and New Zealand LaRDR, and ANZ and APAC Myeloma and Related Diseases Registries. Her work was instrumental in developing national clinical trials underway in myeloma, aplastic anaemia and critical care, which have the potential to transform patient care. She has a strong interest in supportive care and is the lead investigator of the Immunoglobulin use and outcomes in Chronic lymphocytic leukaemia And Non-Hodgkin lymphoma (ICAN) Study conducted through LaRDR and the RATIONAL platform trial on the use of immunoglobulin replacement therapy in blood cancers.



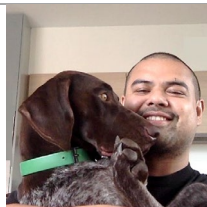
Ms Erica Smeaton, Lymphoma Australia

Erica Smeaton is the National Manager for Lymphoma Australia and a Lymphoma and Multiple Myeloma Clinical Nurse Consultant at Gold Coast University Hospital with over 15 years in haematology. Erica leads a lymphoma nurse team at Lymphoma Australia, which manages the lymphoma nurse special interest group, support service groups, and education and advocacy programs to raise awareness of lymphoma care. Erica is experienced in training and mentoring other health professionals and has recently presented a CAR-T case study at the Cancer Institute in New South Wales.



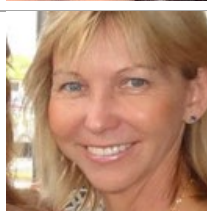
Ms Janne Williams, Lymphoma and Related Diseases Registry

Janne Williams is a Consumer Representative and Steering Committee member of the Lymphoma and Related Diseases Registry (LaRDR), who is currently in remission with Stage 3 Follicular Lymphoma. Before Janne retired, she was an Allied Health Director at Monash Health with a background in physiotherapy. Since her retirement, she has provided input as a Consumer Advisor to Monash Health (with a focus on Oncology Research, Partnering with Consumers, and Emergency Services), Southern Melbourne Integrated Cancer services, and more recently to LaRDR and Victorian Covid 19 Cancer Network Taskforce. Janne is experienced in advising the use of patient-reported outcomes and patient-reported experience measures in the clinical setting, evaluating the impact of Covid vaccination and lymphoma treatments, and advocating for the value of registry in real-world data research.



Mr Marty Luther, Lymphoma Survivor

Marty Luther is a 30-year-old Hodgkins Lymphoma survivor who received his successful chemotherapy treatment five years ago. He received treated at Concord Hospital under the care of Dr Nicole Wong Doo. He has been involved with the Australian Cancer Research Foundation, raising money to fund cancer research. Marty now lives life cancer-free and free any long-lasting side effects, working as an Art Director in Design and Advertising.



Ms Sharon Winton, Lymphoma Australia

Sharon Winton is the CEO of Lymphoma Australia since 2011 and has been a health consumer representative at several consumer stakeholder meetings nationally and internationally. Sharon has a professional background in physical education. Prior to the current role, Sharon worked as the director of a sports and recreation company and the relationship and strategy manager in the private health insurance sector. Sharon is extremely passionate about ensuring all Australians have equitable access to information and medicines. At the personal and professional level, Sharon has been involved with patients, carers and health professionals after Sharon's mother, Shirley Winton OAM, became the founding president of Lymphoma Australia in 2004.